



Annual Service Pre-Visit Assessment for Customers

Contents

General Information	2
Solar Hot Water System – Photos	2
Photo #1: Photo of solar pump skid in full	2
Photo #2: Photo of solar controller screen	3
Photo #3: Photo of pressure gauge readings	4
Photo #4: Photo of leaks in the system's piping (if applicable)	4
Photo #5: Photo of flowmeter readings	5
Photo #6: Photo of solar temperature gauge readings	6
Solar Hot Water System – Additional Comments	6
Summary	6

Annual Service Pre-Visit Assessment Form is filled out by Customers who have an agreement with IGS for the Annual Service Inspection and Maintenance. The form should be filled not earlier than 7 days before and no later than 72 hours before the scheduled annual visit.

In case of doubts and additional questions please contact IGS Team:

1143 Dryden Rd

Ithaca NY 14850

Phone number: 1.866.669.1786

General Information

Please provide your contact information and the Solar Hot Water system location address.

Solar Hot Water System – Photos

Photo #1: Photo of solar pump skid in full

Take a wide-angle photo of the solar pump skid.

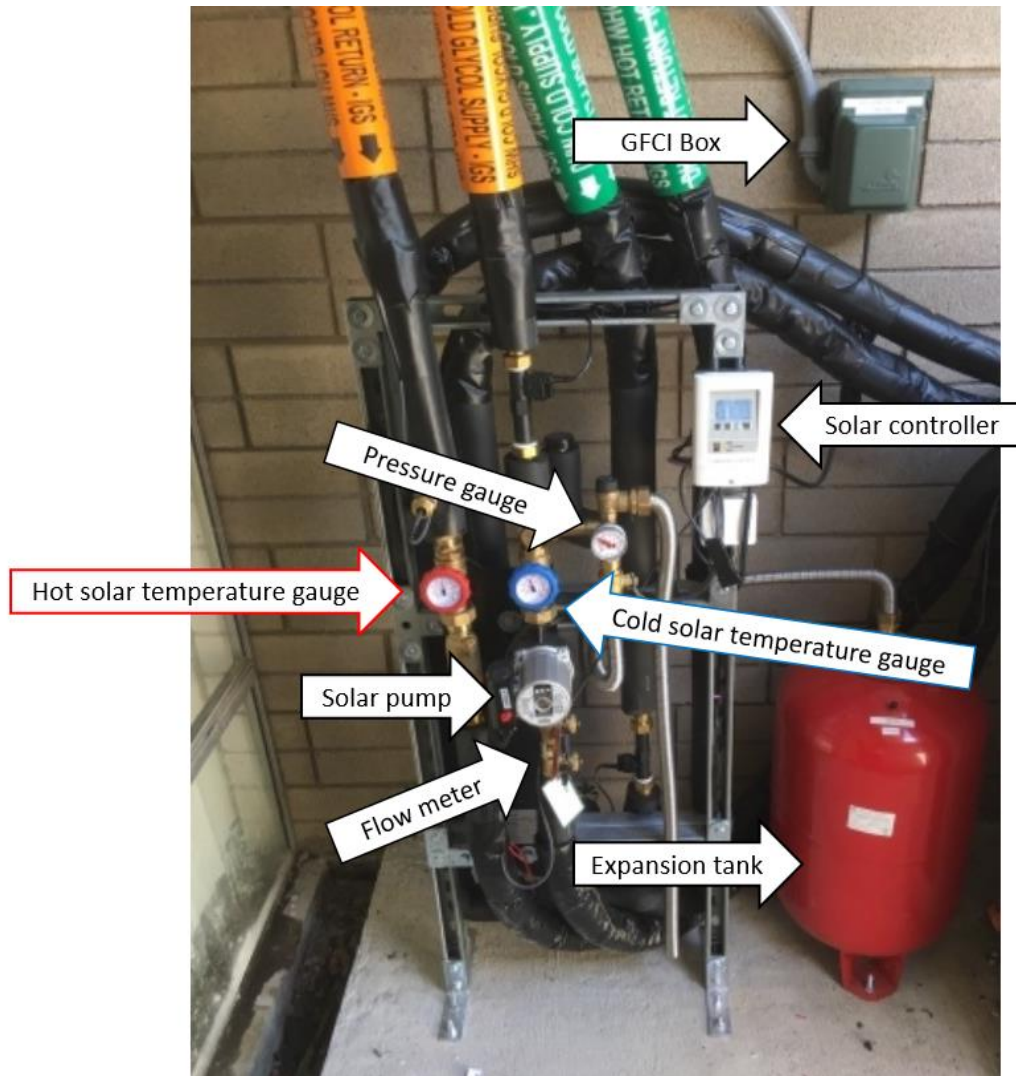


Photo #2: Photo of solar controller screen

Take a photo of the solar controller screen.

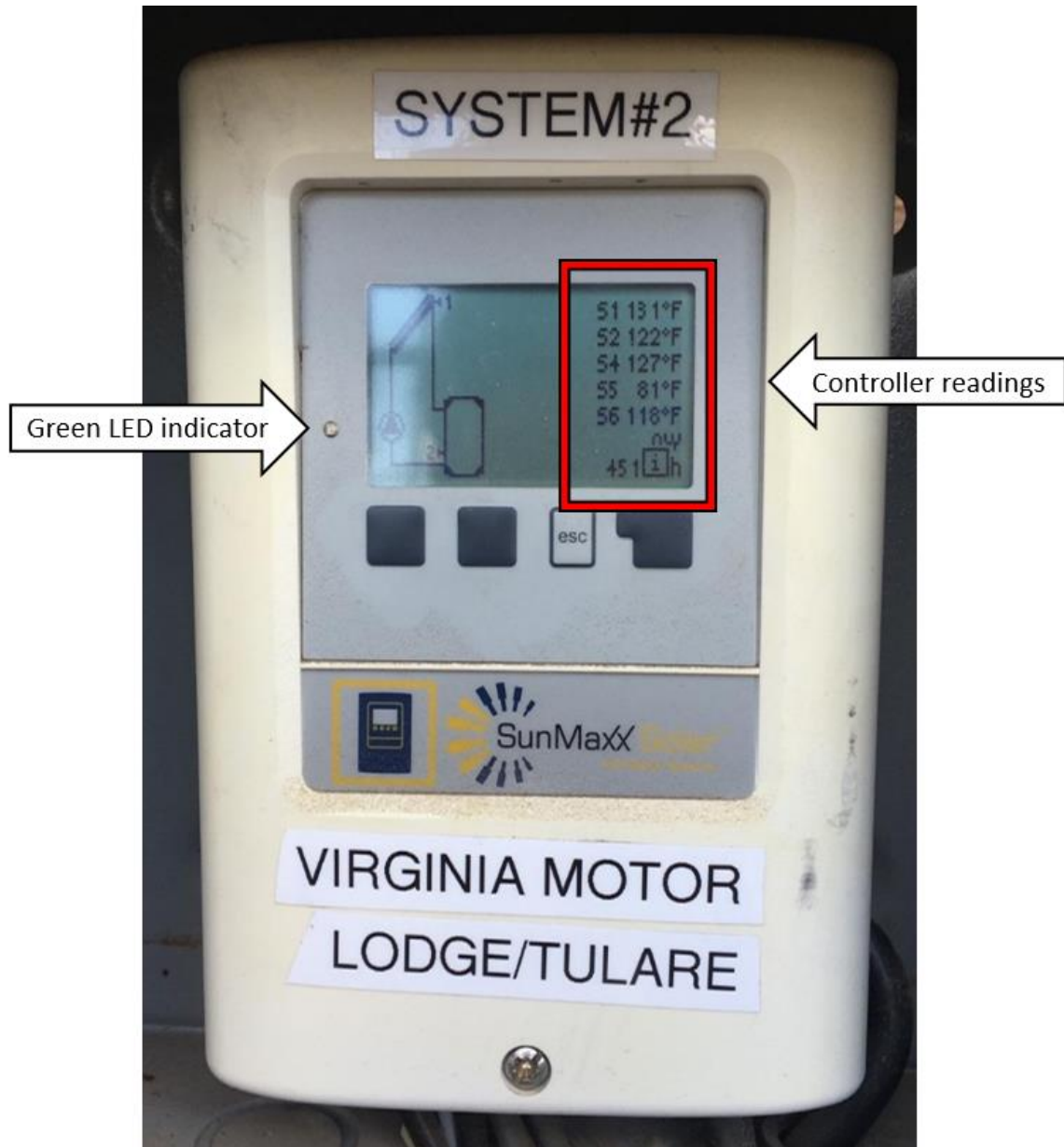


Photo #3: Photo of pressure gauge readings

Take a photo of the pressure gauge located on the solar pump skid.

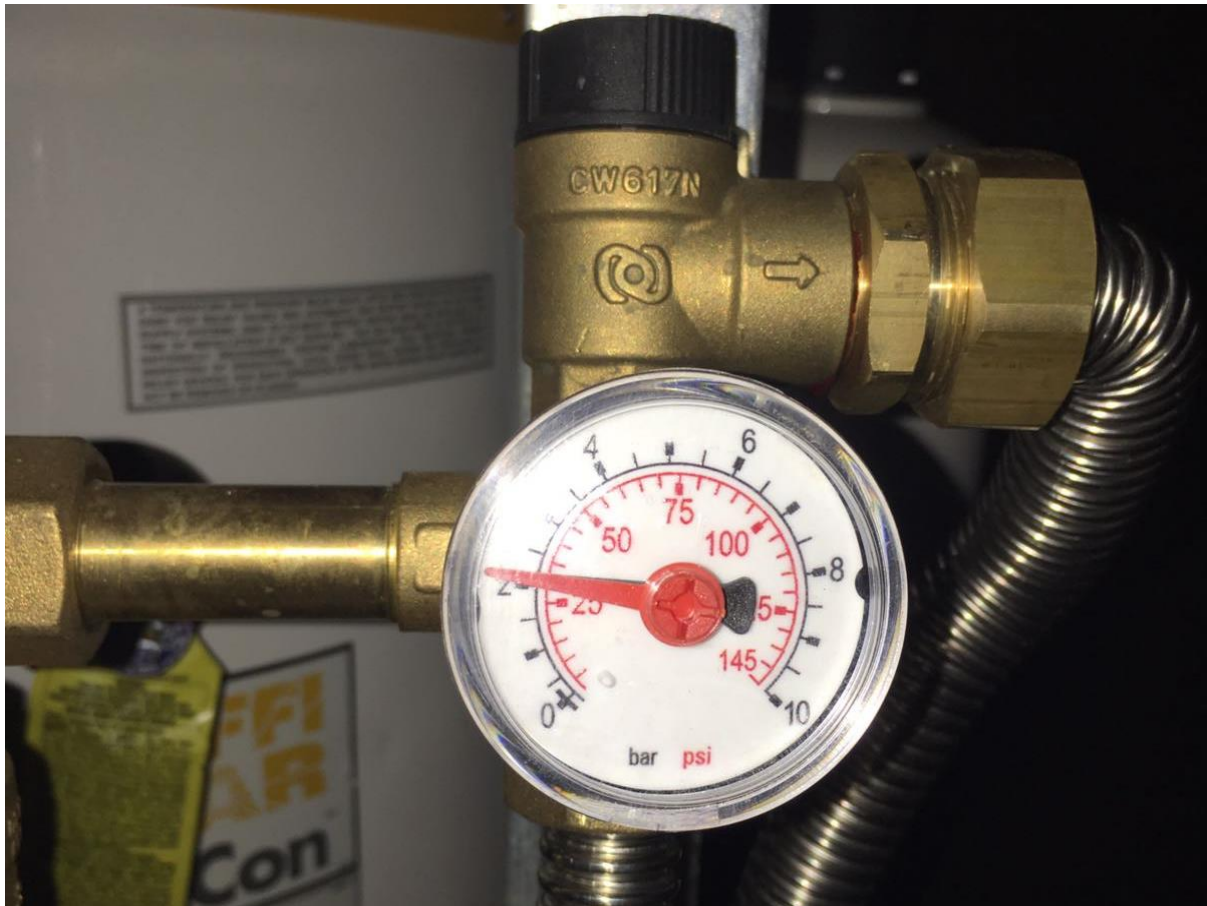


Photo #4: Photo of leaks in the system's piping (if applicable)

Take a photo of the leaks visible on the Solar Hot Water system's piping in case there are any.

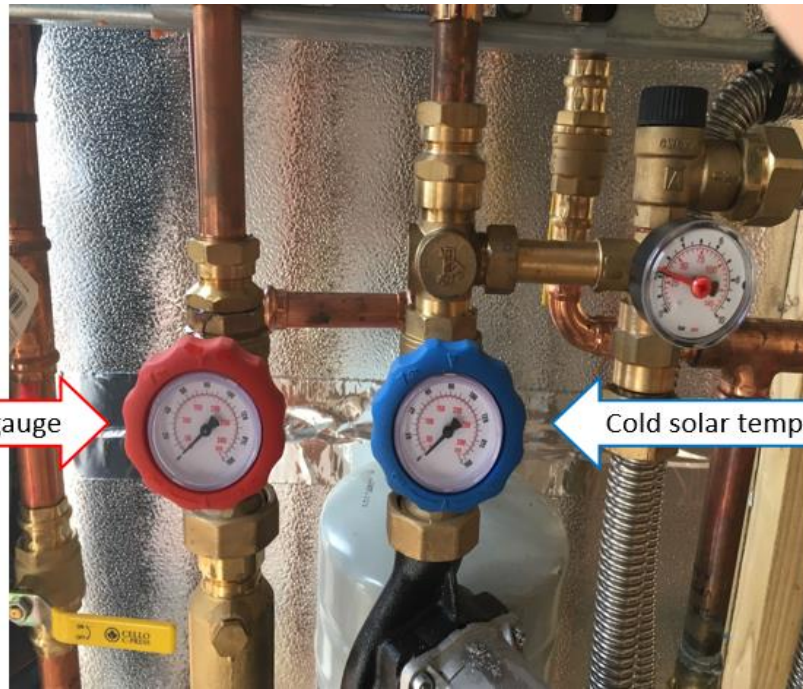
Photo #5: Photo of flowmeter readings

Take a photo of the flowmeter located on the pump skid so that its reading are clearly visible.



Photo #6: Photo of solar temperature gauge readings

Take a photo of the temperature gauges located on the solar system's pump skid.



Solar Hot Water System – Additional Comments

Please include all comments and additional information which you think is relevant for the upcoming service visit and might be useful for the Solar Hot Water technicians.

Summary

Check your form entry and edit it if necessary. Once you have completed uploading the required information, submit the form.